

Off-campus students may isolate in Naismith Hall

September 14, 2020

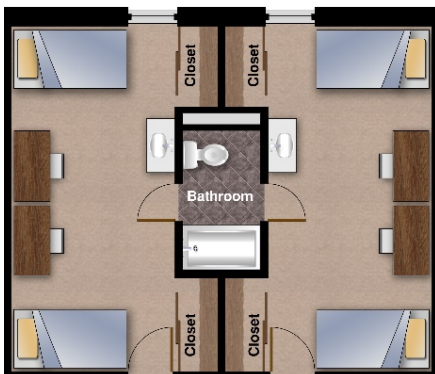
Isolation space in Naismith Residence Hall is now available to off-campus students, including fraternity or sorority students, to isolate for the duration of a COVID-19 illness or while symptomatic and awaiting test results. Approximately 30 spaces are available. Remember that quarantine (staying at home after direct exposure to someone who has the virus) is different from isolation.

Isolation means that you cannot leave your space *for any reason* until directed to do so by a medical professional or unless there is an emergency. Those in isolation at Naismith must also abide by all [KU Student Housing policies](#).

If you must isolate after a positive result for COVID-19 or have symptoms and are awaiting test results, call Amy Long Schell, Coordinator of Special Projects in Student Housing, at 785-864-2495 or email amylong@ku.edu between 8a-5p, Monday through Friday, to request isolation space. The cost for isolation in Naismith Hall for off-campus students is \$25 per night, plus the cost of food ordered through KU Dining Services. The costs will be billed to your KU Enroll & Pay account. After you are assigned by KU Student Housing staff to a Naismith room, you will receive instructions about how to check-in at the buildings, what to bring, where to park, the WiFi password, and other Naismith-specific information.

KU Student Housing will work closely with staff at Watkins Health Services to confirm dates for isolation and when you will be cleared to leave.

What's in Naismith Hall, 1800 Naismith Drive



The private bedroom will have only one occupant in the room and includes furniture - a bed, desk and desk chair. Basic bed linens, a pillow, and towels are provided, although you may wish to bring your own for your comfort. Naismith isolation bedrooms each have an in-room sink, a refrigerator, and microwave. The jack-and-jill bathroom will have toilet paper provided and disinfectant for you to clean the space before and after use. Privacy is ensured by a lock on each bathroom door. It's possible that another student of the same gender may be isolating in the adjoining bedroom.

Dining

When in isolation, you cannot leave to get food, nor will the front desk be responsible for any deliveries of any type except from KU Dining Services. You may request and purchase your meals from [KU Dining Services](#), which is practicing contactless delivery in Naismith. Charges will be billed to your Enroll & Pay account.